



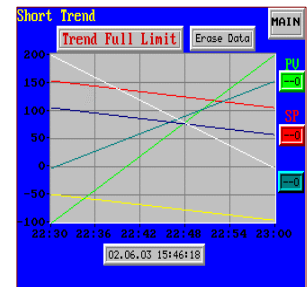
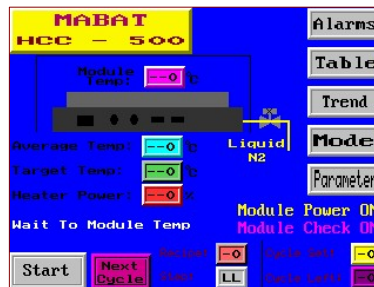
HCC-500-1 heating cooling chamber has been designed for burn-in testings. The unit can be operated and programmed from the touch screen terminal, located on the front side of electric cabinet.

The plate can reach temperatures in range of -90 to +150 °C.

Target temperature of the plate or module is defined in the pre-programmed recipes and controlled by electrical heating element and liquid nitrogen according to recipe.

## HCC-500-1 Heating cooling chamber

- The plate can reach temperatures in range of -90 to +150 °C
- The unit can be programmed for up to five different recipes. Each recipe contains five parameters: Ramp Time, Target Temperature, Dwell time, Check on-off and Power on-off
- The unit is equipped with plastic chamber to keep the plate under dry condition. This achieved by constant dry N<sub>2</sub> flow to the chamber
- The unit is controlled by local touch screen operation



### Options

- Oxygen Analyzer (by customer)
- General dimensions could be modify according to customer requirements
- Working area could be modify according to customer requirements

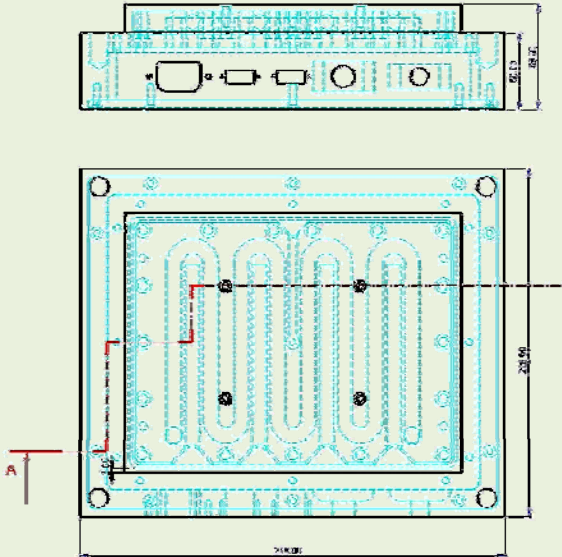
### Standards

MABAT works in accordance with ISO. ISO 14001 and ISO 9001 standards. Member of SEMI .

All products are design and manufacture according to SEMI guidelines.



### HCC-500-1 Heating cooling chamber



#### Dimensions

	Height	Width	Depth
Plate	17 mm	160 mm	210 mm
Plate working area	67 mm	170 mm	220 mm
Chamber	500 mm	230 mm	278 mm
Control panel (for 19" rack)	220 mm	480 mm	

Maximum heating rate	15 °C/min
Maximum cooling rate	10 °C/min
Temperature	-90 to 150 °C

#### Utilities Needed

Liquid N <sub>2</sub> Pressure	100 psi Max.
Gas N <sub>2</sub> Flow	50 lpm Max.
Gas N <sub>2</sub> Pressure	60 psi

#### Electrical

Supply	220 VAC 12A, 50 Hz
--------	--------------------

#### Construction Materials

Working surface	Aluminium
Gas Chamber	Perspex

MABAT can offer a turn-key solution if required and have their own experienced team or approved local contractors to ensure project installation and acceptance deadlines are achieved.

MABAT have a range of products to suit most applications and can also provide custom built systems for non-standard requirements. Site visits can be arranged to ensure the end user's exact needs are understood and accommodated.

Please contact our offices to obtain advice and quotations.

For applications outside any system's specification or capabilities please refer to our local representative or the MABAT Headquarters at Kiryat Gat.

MABAT have more than 25 years experience supplying systems to the Semiconductor and Solar Cell manufacturing industries.

#### Contact details

Kiryat-Gat, ISRAEL  
 Tel. + 972.8.660.1320  
 US toll free + 1.866.908.6297  
 info@mabat-systems.com  
 www.mabat-systems.com